

Living at USC: Freshman-Year Students



2021 - 2022

Changes. Challenges. Choices.

Your undergraduate years at USC may be your first experience living away from home or your first time in a new city—possibly even a new country. It will be in an exciting new environment.

Choosing to live on campus can enhance and expand your college experience. You'll be exposed to innovative ideas, keep a different schedule and make new friends. This new lifestyle will be a change and a challenge, but it will also be memorable and exciting. This booklet can help you with one of your biggest decisions—determining where to live. You will find descriptions of USC's freshman housing facilities and our many special interest programs. You will also learn about meal plans, parking and how to select your roommate.

Why live in university housing? Because you will be close to your classes, USC libraries, and the student organizations and events that make campus life rewarding. Your years at USC will be enriched by your fellow residents—a mix of students from places as divergent as Brooklyn, Bangkok and Boise. You will make friendships that will last a lifetime.

See what we have to offer. Welcome to USC Housing!





Table of Contents

Living Options

Deciding Where to Live	2
Housing for Freshmen	3
Housing Accommodations	4
Floor Plans	4

Preparation

Items to Bring to Campus	6
Financial Facts	7

Housing Options

Residential Colleges	8
Special Interest Housing	22

Residential Life

Living with Others	24
Residential Experience	25

Residential Services

USC Housing Services	26
Residential Safety	27
Meal Plans & Dining Options	28
USCard	30
USC Bookstore	30
Transportation & Parking Services	31

Housing Assignments

Application & Assignment	32
Housing for Spring 2022	36

Directory

37



Deciding Where to Live

With all the buildings and room accommodations USC housing offers, you will want to make an informed decision. This section will help you find the housing that's right for you.

Housing Preferences

Should you live in a suite, apartment or residence hall? Your preference will depend on the lifestyle you enjoy. Each type of housing provides Resident Assistants, Faculty in Residence, mentors, and programming and activities.

Keep in mind that no matter where you live, the quality of your experience depends largely on your participation.

The USC Housing Advantage

With university housing at USC you have...

- No commute
- Faculty involvement
- Community activities & programs
- Rent payable via university student account
- A Department of Public Safety (DPS) that operates 24 hours a day
- A computerized entry monitoring system
- Live-in staff available seven days a week
- Free cable TV & WiFi connections
- No extra rent to pay if your roommate leaves
- Easy access to libraries, the Lyon Recreation Center and other campus facilities
- Free USC bus & Campus Cruiser service
- Maintenance service available 24/7 for emergency repairs
- The option to be reassigned to different housing
- Multiple workout areas with state-of-the-art equipment
- Laundry facilities

Housing for Freshmen

USC's freshman housing is designed to create communities where students live and study together, socialize over meals in our residential dining facilities, and adjust to college life. Numerous programs and activities keep residents involved and help them make friends.

USC Housing considers you a freshman if you are a recent high school graduate with no college experience. Freshmen younger than 18 may wish to consider living in a smaller community rather than one of the larger, suite-style buildings.

Residence Halls

Located within two residential colleges, New North and South, USC's residence halls offer convenient access to university resources. The approximately 1,100 spaces in these buildings are available primarily for freshmen.

Living here offers the traditional collegiate housing experience. Students stay in double-occupancy rooms and share community bathrooms, lounges, study rooms and workout areas. This format, along with the rich history of some of these buildings, makes residence halls a very popular choice. They usually fill quickly, so apply early!

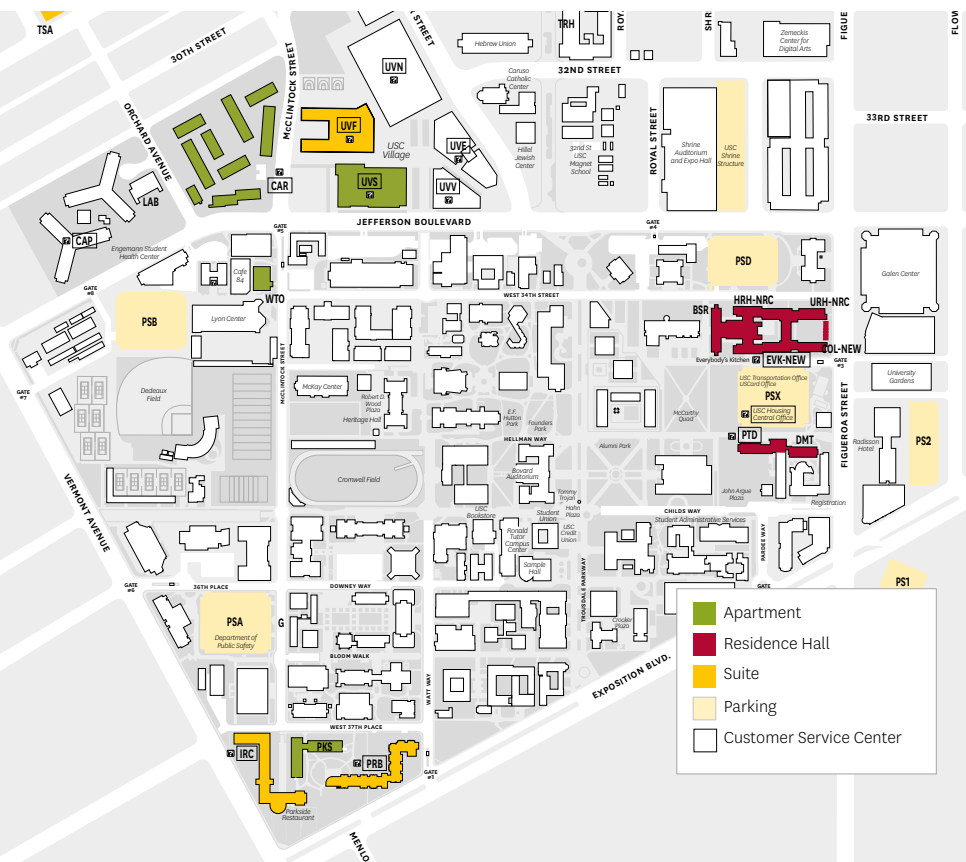
Suites

USC has three suite-style buildings: the Parkside Arts & Humanities and International Residential Colleges on campus and McCarthy Honors College in the USC Village. These offer approximately 1,300 spaces for incoming freshmen.

Suite floor plans vary by building and are made up of two to four rooms, either single or double occupancy with one large or two smaller bathrooms. Some, such as those in the International Residential College, also have a small common area.

Apartments

Freshmen may request apartments that are part of on-campus residential colleges: Webb Tower and Parkside Apartments. They may also choose Cardinal Gardens or the Cale and Irani Residential College located close to campus. These buildings are primarily for upperclassmen, so spaces for freshmen are limited. (See page 21.) Approximately 700 spaces are designated for freshmen.



University Park Campus

RESIDENCE HALLS

- BSR** Birnkrant Residential College
- DMT** Marks Tower
- NEW** New North Residential College
- PTD** Pardee Tower

SUITES

- UVF** McCarthy Honors College
- PRB** Parkside Arts & Humanities Residential College
- IRC** Parkside International Residential College

APARTMENTS

- CAR** Cardinal Gardens
- PKS** Parkside Apartments
- UVS** Cale and Irani Residential College
- WTO** Webb Tower

Living Options

Housing Accommodations

Choosing university housing means more than just putting a roof over your head. USC strives to provide its students with pleasant living environments that include many special features.

General Amenities

All USC housing units provide high-speed, wireless connections and cable TV with HD and premium stations. Rent includes electricity, gas and water costs. Laundry facilities are available in all buildings, operated by either credit or debit card—there's no need to stock up on quarters in order to have clean clothes. Most buildings have recreational spaces, study lounges and other common areas.

Furnishings

All university housing facilities are furnished. Every resident is provided with an extra-long twin bed (36" X 80"), desk, desk chair, three-drawer dresser and closet space. For information about ordering linens for extra-long twin beds, see page 6.

All residence hall rooms and suite bedrooms also come with a microfridge (a small refrigerator-and-microwave combination unit).

Students with Disabilities or Requesting Specific Accommodations

The office for Disability Services and Programs (DSP) facilitates disabled students' full participation at USC. Students must register with and be approved by DSP and complete a housing application to be eligible for special housing considerations. Please contact DSP and USC Housing as early as possible if you have such needs (including requests for single accommodations).

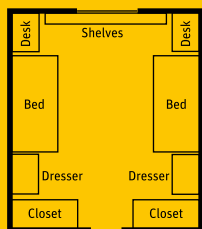
Housing for students with disabilities is available in several locations, accommodating different levels of access. Because of the high demand and limited supply of this housing, USC cannot guarantee assignment to a specific building or room type. USC Housing works closely with DSP to assign students with special needs to appropriate accommodations, based on availability and DSP's recommendations.

Disability Services and Programs

2601 Watt Way, #120 (GFS)

Phone: (213) 740-0776 | **Email:** DSPFrontDesk@usc.edu

Floor Plans



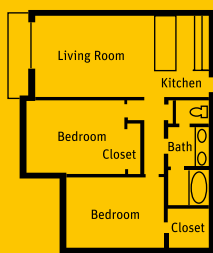
RESIDENCE HALL DOUBLE

Buildings:

Birnkrant, New North, Marks Tower, Pardee Tower

Occupancy: 2

This accommodation consists of a furnished room used for both studying and sleeping. A gender-specific community bathroom is located on the same floor. Approximate dimensions of these rooms are 12' by 15'.



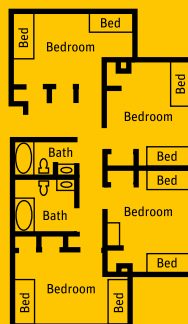
TWO-BEDROOM APARTMENT

Buildings:

Cardinal Gardens, Cale and Irani Residential College, Webb Tower

Occupancy: 4

This floor plan includes a living room, two double occupancy bedrooms, a bathroom and a full kitchen with a stove and refrigerator.



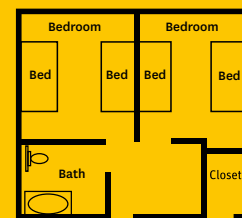
SUITE

Buildings:

International Residential College, Arts & Humanities Residential College

Occupancy: 5, 6, 7 or 8

Most suites in these buildings have four double rooms to accommodate eight residents (pictured). However, the International Residential College has a variety of suite types, some of which include both single and double rooms. All suites have two bathrooms.



LOFTED SUITE

Buildings:

McCarthy Honors

Occupancy: 4

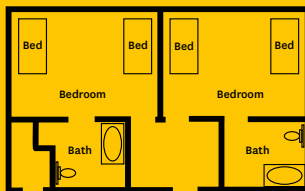
This suite type consists of a full bathroom and two small bedrooms with lofted beds; a desk and dresser are placed underneath each bed.



Furniture

Every resident in USC Housing is provided with:

- One twin bed (extra long, 36" X 80")
- One desk with chair
- One three-drawer dresser



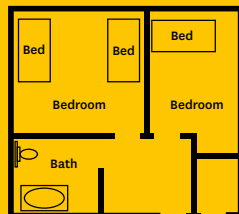
SUITE

Buildings:

McCarthy Honors

Occupancy: 4

Accommodating four residents, this plan has two double rooms, a small entryway with seating and two full baths.



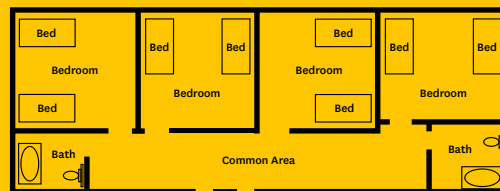
SUITE

Buildings:

McCarthy Honors

Occupancy: 3

Three residents share this suite consisting of a single and a double room, a small entryway and a full bath.



SUITE

Buildings:

McCarthy Honors

Occupancy: 8

This large suite has four double occupancy rooms, two full baths and a common area.

USC housing offers a wide variety of floor plans. The illustrations presented here show typical configurations; however, actual layouts and dimensions will vary among buildings that share the same basic floor plans.

More individualized plans and photos can be found on our website: housing.usc.edu

Items to Bring to Campus

Do

Bring with you:

- Towels
- Blankets
- Bedspread or comforter
- Sheets
- Pillows & pillowcases
- Mobile phone
- Alarm clock
- Toiletries
- Hangers
- Decorations
- Fan
- Computer
- TV (cable ready)
- Desk lamp

Don't

Please leave the following at home:

Pets

Students are not permitted to have dogs, cats or other pets in USC Housing. The only exception is fish in a 10-gallon (or smaller) tank. Residents found with a pet will be charged a substantial clean-up and re-carpeting fee and documented for violating university policy.

Air Conditioners

If your housing does not have air conditioning, you are not permitted to install a unit yourself. This is considered a “physical alteration” of the room or apartment, which for safety and security reasons is prohibited by your contract. If you need an air-conditioned room, please select one of our many facilities with air conditioning when you complete your housing application.

Dish/Satellite TV Antennas

Installation of these devices is considered a “physical alteration” of the building and/or the room or apartment, which is not allowed for safety and security reasons. Remember: All housing facilities come with cable TV service.

RHA Linens Program

Our residence halls and apartments contain extra-long twin beds that require specific linens to fit the mattresses. In conjunction with On Campus Marketing, the Residential Housing Association (page 25) has arranged to provide you with high quality extra-long linens, with on-campus delivery available. This summer, you will receive a letter and order form that describes available products and special packages. Please order by the deadline to ensure you have your linens sent to USC for pick-up on Move-In Day. Proceeds fund various student leadership development programs and initiatives at USC. Please visit resed.usc.edu for more details.





Financial Facts

What costs are associated with living at USC? How does the billing system work? The information provided here will answer many of your questions.

Housing Fees

Application Processing Fee

A \$55 nonrefundable application processing fee will be applied to your first billing statement. See “Application & Assignment”, page 32.

Contract Confirmation Payment

An \$800 confirmation payment must be made online at the time you confirm your contract. See “Contracts”, page 34.

Rent

Rent and meal plan costs are billed before the beginning of each semester (July and December). Charges will appear on the billing statements issued by the university Cashier’s Office.

Other Charges

Residential Meal Plans

All freshmen are required to have a meal plan. For more information, see “Meal Plans & Dining Options” on page 28.

Parking

Students who choose to purchase a parking permit will have its cost charged to their account. See “Transportation and Parking Services”, page 31.

Billing Procedures

Each admitted student has a billing account that reflects all university-related charges and credits, including tuition, lab and general fees, financial aid, and dining and housing charges. You may check on and pay your current bill by logging in to **my.usc.edu** and clicking on the “Pay My Bill” option. Your fall semester housing charges will appear on your August bill. Rent payments must be made to the Cashier’s Office, not to USC Housing. Only application and confirmation payments are made directly to USC Housing.

If you have university billing questions, call the Cashier’s Office at (213) 740-7471. Please visit **financialaid.usc.edu/contactfao** with any questions about financial aid or loans.

Items Included in Rent

Residents of USC Housing will not be billed separately for:

- Utilities (gas, electricity, water)
- Cable TV service
- Wireless and Ethernet Internet connections



Residential Colleges

Residential colleges provide a unique experience in which students have opportunities to meet people from all across the United States and the world. Together, they learn to live, interact and socialize, all while creating memories that prove this is more than just a place to sleep—it is a home away from home. Students have the opportunity to live in a community that cultivates their social, academic and cultural growth as young adults, as well as interact with a variety of staff who are there to support them in their transition to college.

The Residential Experience










Every freshman is housed in a residential college when they arrive at USC in the fall semester. There, they form strong connections by participating in events organized by the Resident Assistants and Faculty in Residence and become integral members of their communities through interactions with their peers. Residential colleges also allow students to bridge the classroom experience by engaging in conversations over dinner with faculty, attending presentations by guest speakers, participating in community service, and learning about campus resources.

The residential college experience bookends the undergraduate experience. New students represent their residential colleges at New Student Convocation and then are able to become active participants in the Residential College Cup competition. At the end of their four years at USC, students return to their residential colleges for a reception with their Faculty in Residence and Residential Education staff.

Building Choices

From residence halls to suites and apartments, USC housing offers a wide variety of building options. The following pages provide the details you will need to make an informed choice about where to live. Be sure to review the special interest communities described in this section.

Housing Icon Key

	AIR CONDITIONING		RECREATIONAL FACILITIES
	COMMUNITY BATHROOM		REQUIRED MEAL PLAN
	CUSTOMER SERVICE CENTER		RESIDENTIAL COLLEGE
	PARKING		BUS STOP
	SPECIAL INTEREST COMMUNITY		

Rents listed and building descriptions are subject to change.
Check the USC Housing website for up-to-date information.

The availability of listed housing accommodations, programs and services is subject to local health authority restrictions.

Parking at University Housing

Buildings listed with the parking icon have on-site parking facilities. USC Transportation issues permits for all lots and garages. In most cases the number of spaces is limited. Applications are processed on a first-come, first-served basis; not all applicants will receive a parking space. Please see page 31 for information about obtaining a parking permit for a university housing building.

Requesting a Single

USC Housing receives many requests for single rooms. Singles comprise approximately two percent of our total housing inventory, and most are filled by returning students. Although we do our best to accommodate new applicants' preferences, it is not possible to offer singles to everyone who requests them.



Birnkrant Residential College

As the smallest residential college at USC, Birnkrant Residential College enables students to be part of a tight-knit community. Commonly referred to as “Eight Floors of Open Doors”, Birnkrant nurtures friendships and relationships that often span the course of students’ time at USC.

In 1994, Birnkrant began operating as a residential college, with a full-time, live-in Faculty in Residence member working to bridge students’ experiences inside and outside the classroom. Today, the Faculty in Residence member works alongside Residential Education staff to provide programs that introduce students to Los Angeles culture, art, food and more. Residents take great pride in living in Birnkrant and often remember it as one of their favorite USC experiences.

Birnkrant Special Interest Community:

Asian, Pacific Islander, Desi American Leaders Community (APIDALC)

This program is dedicated to all students who have an interest in Asian Pacific American history, culture, and social and contemporary issues. This program strives to cultivate a space for active participation, leadership development, personal growth and a successful transition into college.

The APIDA Leaders Community is supported by the Office for Residential Education and the Asian Pacific American Student Services cultural center.

If you are interested in living on this floor, you must complete a supplemental application. See page 22 for details.



BIRNKRANT RESIDENTIAL COLLEGE (BSR)

642 West 34th Street, Los Angeles, CA 90089

2021-2022

Spaces	Room Type	Room Code	Occupancy	Rate/Person
4	Single	SGLE	One-person	\$6,960/Sem
216	Double	DBLE	Two-person	\$5,051/Sem
39	Triple	TRPL	Three-person	\$5,210/Sem

Conveniently located next to Leavey Library and the EVK dining hall, Birnkrant is an eight-story building with seven residential floors. Each floor has approximately 20 rooms, two large bathrooms, a laundry room and a recently renovated and furnished study room. The first floor includes the home of the Faculty in Residence, a music practice lounge, a study area, a multipurpose room and a lounge. This floor is also home to the popular Starbucks at Trojan Grounds coffee house, which accepts meal plan Dining Dollars.

Residents have a required meal plan, which is accepted at residential dining facilities and other campus eateries.





McCarthy Honors College

Located in the USC Village, McCarthy Honors College offers a vibrant and enhanced living-learning experience for more than 500 Trustee and Presidential scholars in a suite-style living environment. With faculty interaction, diverse programming, opportunities to experience Los Angeles and an Honors College retreat, this program is designed to inspire students to reach their full potential as agents of global change.

The McCarthy Honors College experience is led by two Residential Education staff members in conjunction with the Faculty in Residence, in addition to contributions by numerous faculty from diverse disciplines. Themed discussions are held weekly in the McCarthy multipurpose room. Guests might include USC faculty members and senior administrators, distinguished professionals in the arts and humanities, and prominent visiting scholars.

McCarthy residents move in early (Monday, August 16) to attend the Honors Retreat on Tuesday, August 17. Retreat activities focus on establishing a strong connection to the residential college and its staff while introducing the support systems available to honors students. For more information, please visit the Residential Education website at resed.usc.edu. Space in McCarthy Honors College is available on a first-come, first-served basis.



MCCARTHY HONORS COLLEGE (UVF) (CIC)

3096 S. McClintock Ave, Los Angeles, CA 90089

2021-2022

Spaces	Room Type	Room Code	Occupancy	Rate/ Person
8	Single	2PSGLE	One-person	\$7,415/Sem
35	Single	3PSGLE	One-person	\$6,995/Sem
40	Single	4PSGLE	One-person	\$6,950/Sem
98	Double	3PDBLE	Two-person	\$5,430/Sem
112	Double	4PDBLE-loft	Two-person	\$3,600/Sem
16	Double	4PDBLE	Two-person	\$5,765/Sem
152	Double	4PDBLE-DB	Two-person	\$6,055/Sem
64	Double	8PDBLE	Two-person	\$5,765/Sem

The crown jewel of the dynamic USC Village, the five-story McCarthy Honors College boasts four residential floors, each with more than 30 suites, multiple lounges and study rooms, and a laundry room. Two spacious landscaped courtyards, one on the ground level and the other on the first residential floor, are appointed with luxurious outdoor furniture. The ground floor houses a large lobby, classrooms, a residential dining facility, an Amazon University store, Italian Cafe, USC Credit Union and secure indoor bike parking.

This facility is nearly double the size of the previous honors housing, allowing for a greater number of qualified students to be assigned to the program. However, assignments are made on a first-come, first-served basis according to housing configuration preferences, and housing in McCarthy is not guaranteed.

Residents have a required full meal plan, accepted at the on-site dining hall and other locations.





New North Residential College

New North Residential College was founded in 1993 as two separate Residential Colleges, which were merged into one community in 2017.

New North fosters a strong community created through programs that draw upon the cultural resources of both USC and Los Angeles. Noted for its vibrant atmosphere and strong personal and academic support network, the staff and faculty sponsor activities that encourage students to learn and have fun by making close connections with one another, the city and the world around them. Students can attend a dinner hosted by New North's Faculty in Residence, who are joined by talented and accomplished guests from the university and the city at large.

New North Residential College occupies a premium location on campus. You can grab a cappuccino from the Starbucks at Trojan Grounds on your three-minute walk to Leavey Library, toss a Frisbee on McCarthy Quad and appreciate the view of the neighboring reflecting pool. New North is also home to the EVK dining hall, which allows residents to connect with a diverse group of students from all over campus.



NEW NORTH RESIDENTIAL COLLEGE (COL-NEW) (EVK-NEW) (HRH-NRC) (URH-HRC) 635 McCarthy Way, Los Angeles, CA 90089

2021-2022				
Spaces	Room Type	Room Code	Occupancy	Rate/Person
13	Single	SGLE	One-person	\$6,960/Sem
24	Single w/ sink	SGLE-WS	One-person	\$7,100/Sem
360	Double	DBLE	Two-person	\$5,051/Sem
162	Double w/ sink	DBLE-WS	Two-person	\$5,665/Sem

Despite its name, New North Residential College is one of USC's oldest housing facilities. Steeped in Trojan tradition, New North combines classic residence hall architecture with modern amenities and forward-looking programs. It is one of three residence halls offering a limited number of singles to freshmen.

A workout area equipped with treadmills, ellipticals and stationary bikes makes living a healthy lifestyle easy. Every floor has a laundry facility. Common areas have recently been remodeled—study rooms provide quiet reading spaces, and television lounges make great places to hang out with friends. Residents have a required meal plan, accepted at residential dining facilities and other campus locations.





Parkside Arts & Humanities Residential College

The Parkside Arts & Humanities Residential College creates a space where students and faculty form a strong scholarly community centered on the arts and humanities. In addition to its focus on music, writing, drama, visual arts and architecture, the Parkside Arts & Humanities Residential College connects students with the cultural offerings of campus as well as Los Angeles. The USC Fisher Museum of Art, the Roski School of Art and Design, and the School of Architecture are adjacent to this residential college and provide convenient access to their creative communities. Living in the Arts & Humanities Residential College gives students from all academic backgrounds the opportunity to express themselves—from mounting a theatrical production to screening their films or reading their poetry—in state-of-the-art facilities. Each year, residents stage a showcase of student works in the Arts in the Park program.

Members of the Faculty in Residence host weekly Parkside Faculty Dinners that feature stimulating guest speakers and discussions. Faculty also host floor dinners, performances, screenings and trips around Los Angeles. Living at this college is not limited to students majoring in the arts and humanities. Anyone who appreciates the role of culture and the exploration of ideas is invited to apply.



ARTS & HUMANITIES RESIDENTIAL COLLEGE (PRB)

920 West 37th Place, Los Angeles, CA 90089

2021-2022				
Spaces	Room Type	Room Code	Occupancy	Rate/Person
432	Double 8P-ST	8PDBLE	Two-person	\$5,605/Sem
6	Double 6P-ST	6PDBLE	Two-person	\$5,825/Sem

The four-story Arts & Humanities Residential College provides housing for 440 students in suites of double rooms clustered around a small common space. A wide variety of facilities are shared with the other residents of the Parkside area, including a performance space, a multipurpose room, music practice rooms, a collaborative learning center, a lounge on each floor, a laundry room and a gaming room. The building also has a dedicated Customer Service Center.

Residents of the college have a meal plan that can be used at the on-site dining hall as well as other dining venues. Allergen- and gluten-free foods, as well as vegetarian or vegan options, are available for those with dietary restrictions.





Parkside International Residential College

In the 21st century, a compassionate understanding of global issues is vital. The Parkside International Residential College serves as a campus focal point for discussing global issues, learning about international cultures, and connecting with students from abroad. Living at Parkside will allow you to participate in intellectual, cultural, and social exchanges with people who have a wide range of backgrounds and interests, in one of the most attractive locations on campus. Parkside International Residential College hosts an array of internationally themed programs and events, marking holidays and independence days from around the world. Parkside also hosts programs with experts from a variety of fields: visiting scholars; renowned international figures; and world-class artists from stage, television, and film.

Residents are encouraged to participate in local community service projects and take advantage of volunteer opportunities that draw upon the city's extensive international connections. The building's Faculty in Residence work to support group activities, events and programs that engage residents' compassion and curiosity, including field trips to see local theatre and discover Los Angeles. Residents can take advantage of a weekly dinner and dessert reception at which experts from both on and off campus speak informally about their work and life experiences.

The residential college is made up of two different buildings, giving new first year students the option of either apartment or suite-style housing.



PARKSIDE APARTMENTS (PKS)

3730 South McClintock Avenue, Los Angeles, CA 90089

2021-2022				
Spaces	Room Type	Room Code	Occupancy	Rate/Person
10	Studio	STU1	One-person	\$7,025/Sem
98	Studio	STU2	Two-person	\$5,010/Sem
12	Large Studio	STU2-LG	Two-person	\$5,170/Sem
106	One-bedroom	1B2P	Two-person	\$6,005/Sem
3	Two-bedroom single	2B3P-SGLE	One-person	\$6,225/Sem
6	Two-bedroom double	2B3P-DBLE	Two-person	\$5,380/Sem

Part of the Parkside Residential College complex, Parkside Apartments is one of only two apartment buildings located directly on campus. Its twin six-story towers offer students a variety of apartment choices. Each apartment has its own kitchen and bathroom, allowing for independent living.

Some residents are returning students from the International and Arts & Humanities residential college programs. Students living here may access the common facilities and participate in the cultural and educational opportunities of the adjacent residential college facilities. Residents have a required meal plan.





Parkside IRC Special Interest Community:

Women in Science & Engineering (WiSE)

Residents on the WiSE floor are offered resources and opportunities to help them excel both in and out of the classroom. Residents learn about prominent clubs and organizations on campus, attend lectures and panels by renowned science and engineering professors, and gain critical insights from older female students about attaining both academic and professional success.

PARKSIDE INTERNATIONAL RESIDENTIAL COLLEGE (IRC)

3771 South McClintock Avenue, Los Angeles, CA 90089

2021-2022				
Spaces	Room Type	Room Code	Occupancy	Rate/Person
36	Single-5P-ST	5PSGLE	One-person	\$6,960/Sem
14	Double 5P-ST	5PDBLE	Two-person	\$5,825/Sem
60	Double-6P-ST	6PDBLE	Two-person	\$5,825/Sem
11	Single-7P-ST	7PSGLE	One-person	\$6,960/Sem
24	Double-7P-ST	7PDBLE	Two-person	\$5,605/Sem
256	Double-8P-ST	8PDBLE	Two-person	\$5,605/Sem

Parkside International Residential College is located in the southwest corner of campus. The four-story building provides housing for 400 students in a variety of five-, six-, seven- and eight-person suites, mixing single and double rooms. Residents enjoy privacy and independence, as well as the benefits of a residential college. Although IRC has “international” in its name, residents are students of varying backgrounds from the U.S. and around the world.

The complex shares facilities with other residents in the Parkside area, including a collaborative learning center for group study, formal and informal meeting and seminar spaces, music rooms, lounges, a recreation room with exercise equipment, a laundry facility and a Customer Service Center. The conveniently-located dining hall features international gourmet cuisine and accommodates special dietary needs, such as gluten-free and vegan. Residents have a required meal plan.





South Residential College

South Residential College comprises two traditional residence halls: Marks Tower and Pardee Tower. This complex for freshmen is conveniently located near the Doheny and Levey Libraries, Tutor Campus Center, important campus service departments, several classroom buildings and McCarthy Quad, an ideal place to relax and enjoy the wonderful Los Angeles weather.

A signature of this residential college is its close-knit community—many describe South as being a true family. South Residential College is supported by an engaging team of faculty and staff who endeavor to create a vibrant community where emphasis is placed on the transition to college and exploring USC's first-year experience programs.

Programming provided by faculty and staff focuses on personal growth and determining one's best pathway for leadership as a USC student and future graduate.

The Faculty in Residence take the lead in creating an environment conducive to student learning and social engagement. Residents are encouraged to attend Faculty Dinners and participate in faculty-student interaction outside the classroom. Students in South Residential College have always benefited from the small number of students on each floor, which creates a strong sense of belonging and community.



MARKS TOWER (DMT)

612 Hellman Way, Los Angeles, CA 90089

2021-2022				
Spaces	Room Type	Room Code	Occupancy	Rate/ Person
188	Double	DBLE	Two-person	\$5,051/Sem

At eight stories tall, Marks Tower offers all the features of a traditional residence hall, as well as gorgeous views from many of the rooms. Students living here have the chance to experience their freshman year together, as they participate in the campus and residential activities so important to a student's first year at college. This coed facility, which houses primarily freshmen, has seven residential floors, each with 14 double rooms.

The common area on the ground floor features a spacious lounge with comfortable living room seating around a large TV. Marks Tower is conveniently located next to libraries, classrooms and dining facilities. Residents may use their required meal plan at all residential dining facilities and other campus locations.





Pardee Tower Special Interest Community:

Latinx Floor (LATF)

For more than 45 years, this special interest residential program has offered first-year Latinx students a positive, supportive community that eases the transition into USC life and empowers them to become prominent campus leaders. Through extensive community service, as well as cultural, academic, and social activities, members of the floor discover their Trojan Family while finding academic and personal success.

Somerville Place (SMRV)

Named after John and Vada Somerville, the first African-American graduates of the Ostrow School of Dentistry, Somerville Place focuses on uplifting and exploring identities within African-American culture and the larger global diaspora. By promoting intellectual development, providing opportunities for leadership and connecting to a legacy of scholars, Somerville Place has aided in the successful transition of Black students into the USC community for more than 20 years.

The Latinx Floor El Sol y La Luna is supported by the Office for Residential Education and La CASA. Somerville Place is supported by the Office for Residential Education and the Center for Black Cultural and Student Affairs. If you are interested in living on either of these floors, you must complete a supplemental application. See page 22 for details.

PARDEE TOWER (PTD)

614 Hellman Way, Los Angeles, CA 90089

2021-2022

Spaces	Room Type	Room Code	Occupancy	Rate/Person
280	Double	DBLE	Two-person	\$5,051/Sem

Close to Doheny Library and McCarthy Quad, Pardee has eight floors, each with 18 double rooms, a common bathroom, and a laundry facility. The air-conditioned lobby features a large TV and comfortable seating area where residents can relax and catch the latest game or the news. The building has study lounges on most floors, as well as a music practice room. The large, modernist second-floor lounge and programming space provides several TVs, tables and comfortable seating—an excellent location to watch Trojan football games. Pardee Tower is a great place to make friends easily while maintaining a positive lifestyle balance of work, rest and play. Residents have a required meal plan that can be used at any residential dining facility, as well as other campus eateries.







West Residential College

West Residential College is conveniently located near the Engemann Student Health Center, the Lyon Recreation Center and the Uytengsu Swim Stadium. As such, West Residential College has begun to develop various wellness-based initiatives. Faculty in Residence focus on different aspects of holistic wellness and hope to create all-encompassing programming around these initiatives. West Residential College is supported by a dynamic team of faculty and staff who endeavor to create a vibrant community where diversity is celebrated and living-learning opportunities abound.



WEBB TOWER (WTO)

1015 West 34th Street, Los Angeles, CA 90089

2021-2022				
Spaces	Room Type	Room Code	Occupancy	Rate/ Person
26	Studio	STU2	Two-person	\$5,040/Sem
43	One-bedroom	1B2P	Two-person	\$6,335/Sem
13	Two-bedroom single	2B3P-SGLE	One-person	\$6,460/Sem
26	Two-bedroom double	2B3P-DBLE	Two-person	\$5,645/Sem
216	Two-bedroom	2B4P	Four-person	\$5,470/Sem

At 14 stories, Webb is USC's tallest housing building, providing many of its residents spectacular views of the city or the campus and offering freshmen an on-campus apartment option. Each floor has just eight apartments, fostering tight-knit communities. Its excellent location near the Lyon Recreation Center, as well as its variety of floor plans and attractive interior design, help explain its popularity with undergraduates.

Next door is King Hall, which includes a large Starbucks café, a computer lab and a mixed-use room perfect for study or other educational purposes. Although no parking is specifically designated for Webb, students can park in the large university parking structure nearby. All residents have a meal plan that can be used at all residential dining halls, as well as other campus eateries.



Additional Options for Freshmen

For freshmen who prefer apartment-style living, a limited number of units will also be available in two of our buildings designated for upperclassmen.



CALE AND IRANI RESIDENTIAL COLLEGE (CIC)
929 West Jefferson Boulevard, Los Angeles 90089

2021-2022				
Spaces	Room Type	Room Code	Occupancy	Rate/Person
44	Two-bedroom	2B4P-LOFT	Four-person	\$3,485/Sem
48	Two-bedroom	2B4P	Four-person	\$5,730/Sem

Located in the USC Village complex, the stylish five-story Cale and Irani Residential College features a 30,000-square-foot state-of-the-art fitness center, a FedEx Office retail location, numerous retail and dining establishments, a large secure indoor bike parking room, and a Customer Service Center. The second floor has two large courtyards offering great places to gather with friends or to study day or night. Four luxurious lounges with floor-to-ceiling glass walls overlook these courtyards from the fourth and fifth floors and are open to all residents.

All apartments are fully furnished and have central air-conditioning. The small, two-bedroom loft-style type does not have a living room. In place of full kitchens, kitchenettes include a sink, oven, and four-burner range, and each bedroom has a small microwave oven and mini-fridge. Freshman residents will have a mandatory apartment meal plan that can be used at the USC Village Dining Hall, as well as other USC Hospitality outlets.

The Cale Residential College takes an interdisciplinary approach to international issues with the goal of creating global citizens. The Irani Residential College focuses on performance science—the confluence of mind, body and business. Residents will learn ways to maximize performance, both individually and within an organization or community.



CARDINAL GARDENS (CAR)
3131 McClintock Avenue, Los Angeles 90007

2021-2022				
Spaces	Room Type	Room Code	Occupancy	Rate/Person
12	One-bedroom	1B2P	Two-person	\$5,650/Sem
48	Two-bedroom	2B4P	Four-person	\$5,245/Sem

This townhouse-style apartment complex consists of nine individual buildings. The fully furnished and recently updated one- and two-bedroom apartments have full kitchens and spacious air-conditioned living rooms with laminate floors and modern furniture. Located just across Jefferson Boulevard from campus, Cardinal Gardens is close to the Lyon Recreation Center, the USC Village Dining Hall and the other amenities of the USC Village. All residents have a required meal plan.

Recreation options include watching the 70-inch TV or playing pool inside the CSC lounge, playing basketball on the half-court outside, or relaxing on the landscaped patio with resort-style seating, dining tables, two barbecues, a fireplace and a water feature. Ample parking is available in a surface-level lot within the complex's gated and walled perimeter through USC Transportation.



Freshmen in Undergraduate Apartments

Some incoming students feel their housing needs for privacy and access to a kitchen would be better met by living in an apartment. Unlike other freshman housing facilities, apartments do not close for the winter break and may be continuously occupied between the fall and spring semesters.

Both facilities have live-in Residential Education staff and onsite Customer Service Centers and are located adjacent to campus. Freshman residents will be assigned a meal plan specific to their housing assignment. More information about these buildings can be found on our website.

Most of the residents of these facilities will be returning and transferring undergraduates. Freshmen will be limited to the number of spaces and room types indicated. Requests for apartments may exceed the number of spaces allotted.



Trojan Voices

“I chose USC because it offered not only a world-renowned program for my major of choice, but also an abundance of opportunities for social advancement like clubs and community groups. And I really wanted to be a part of the Trojan family.”

TRISHA WILLIE. JACKSONVILLE, FL

Special Interest Housing

Our special interest housing enhances your university experience by bringing together students and faculty to share in cultural and academic programs. USC special interest communities attract students who want to make the most of their college years, and each community offers something different. Some bring together students with similar career or academic interests. Others attract people interested in a particular culture or lifestyle. Some communities are small, whereas others are quite large.

How to Apply for Special Interest Communities

If one of these special interest communities seems right for you, be sure to select the program on your housing application. Many special interest communities are available to incoming freshmen only. Check first to confirm you are eligible for your choices. (For example, students must meet certain academic qualifications to live in McCarthy Honors College.) When applying online for housing, be sure to first specify the residence hall, suite or apartment, and then specify the special interest community located within it. Programs fill quickly, so apply early. The following special interest communities require supplemental applications: APIDA Floor, Latinx Floor, Rainbow Community and Somerville Place. Supplemental applications will be available as part of the online housing application process. (See page 33.)

Special Interest Communities in Predominantly Upperclassman Housing

Century Apartments Rainbow Community

The Rainbow Community provides lesbian, gay, bisexual, transgender and queer (LGBTQ+) students, along with their straight allies, a safe and affirming living environment. It is one of a few themed student-housing programs in the United States designed specifically for the LGBTQ community and its allies. Residents are members of Rainbow Scholars, a student organization that promotes the floor through community service, social events and faculty discussions. The Rainbow Community collaborates with academic departments, other campus residential communities, the LGBTQ+ Student Center and the Office for Residential Education to sponsor campus and community events. The Rainbow Community's Overnight Experience gives prospective students the opportunity to visit campus, attend classes, participate in LGBTQ+ events and stay with a student host. All apartments on the Rainbow Community are gender-inclusive. All students who identify as LGBTQ+ or as an ally are encouraged to apply.

The Rainbow Community is supported by the Office for Residential Education and the LGBTQ+ Student Center. If you are interested in living on this floor, you must complete a supplemental application.



Trojan Voices

“I truly feel at home with all of the wonderful and unique people I have met at USC. Students here care about each other and want each other to succeed.”

ATHENA SFERAS. LOS ANGELES, CALIFORNIA



Life in USC Housing

Living in university housing will enrich your freshman year. Joining a community of fellow residents, faculty, and staff members and engaging in activities and programs will broaden your interests and support your studies.

Living with Others

Gender-Specific Housing

In USC residence halls, men and women are typically assigned to different wings or floors with separate bathroom facilities. In buildings with apartments or suites, each individual unit is designated for a single gender. Gender-inclusive housing is also available for freshmen. Contact the Division of Student Affairs regarding application requirements and space availability.

The Roommate Experience

One of the most anticipated events for college students is meeting their roommates. Living with new people is an opportunity to learn from others and share experiences. Students have different expectations regarding roommate relationships. Some people simply want a person who is easy to live with, whereas others are looking for a new best friend. You don't have to be best friends to be good roommates. In fact, it can be easier to live with someone when you spend most of your time with other people. What is important is learning to adjust to new people.

Roommate Requests

If you have a specific roommate in mind, one of you will need to form a roommate group in our online portal, then invite the other to join the group. Everyone in the group must list identical housing preferences, including any special interest programs, when completing their housing applications. You can search for your requested roommate on the "Search by Known Roommates" page of the housing portal and then add them to your application.

Online Roommate Matching

Most new students do not have a specific roommate in mind when they apply. Our online roommate-matching process will help you search for and contact potential roommates.

To use this feature, follow the instructions on page 33 for registering with USC Housing. Profile questions will ask you about your study and sleep habits, level of cleanliness and what you like to do in your spare time. Your answers will be used by our search tool to match you with students who have similar habits and interests.

You will be prompted to create a screen name, enabling you to participate anonymously in the matching process. USC does not use your screen name for any other purpose. (Note: Screen names deemed inappropriate or offensive will be deleted and information about their use forwarded to Student Judicial Affairs as necessary.) Once you apply, you can use our website to search for roommates. You will be provided with potential roommates' screen names and be able to review their answers to the profile questions. Using screen names, you can then contact anyone you think may be a good match for you. If you find someone compatible, log in to the online application and create a roommate group. USC Housing will make every effort to honor your request but cannot guarantee that it will be fulfilled. Once you have been assigned, you may no longer search for roommates.

Roommate Assignments

If, like most freshmen, you do not have a specific request, you will be assigned a roommate based on gender, building assignment and the information in the "Your Profile" section of your housing application. Unlike requested roommates, these matches are subject to change as students are reassigned.

Roommate Information

For applicants participating in roommate matching, updated roommate information will be available on our website as assignments are completed. You will communicate with your roommate or roommates by screen name and may share contact information as you see fit.

Residential Experience

The Office for Residential Education believes student learning is maximized through intentional and student-focused educational opportunities. We strive to create a sense of community on each floor and foster pride within each Residential College by prioritizing collaboration and relationship building.

In order to guide residents to meaningfully contribute to global communities, Residential Education focuses on the following four learning goals:

Equity & Inclusion

As a commitment to creating an inclusive residential community that values the diversity of its members, Residential Education encourages learning about one's social group identity affiliation. By collaborating with campus partners, we will support, educate, and challenge individual understanding of social justice, equity, and inclusion in order to communicate across differences.

Well-Being

Informed by Be Well SC's definition of well-being, Residential Education is committed to proactively providing students with strategies to foster self-care. We strive to help students learn from failure and overcome challenges they encounter within their residential communities. In thriving communities, residents care for others and share resources, so it is important to establish a commitment to healthy relationships.

Self-Awareness

Self-awareness is an integral component of the residential experience at USC. We believe that our students should have an understanding of their personal identities and values. By developing a sense of self, students can then practice effective communication skills. Our goal is to prepare students with practical and transferable life skills.

Community Engagement

Living in residential housing provides students the opportunity to connect with others and foster a sense of belonging and purpose. By being part of this community, residents are challenged to manage conflict and skillfully engage in discourse with their peers. As ambassadors of the Trojan Family, residents are emboldened to practice social responsibility, demonstrate an accountability to self and others, and grow as engaged citizens. For up-to-date information, talk with your RA, look for campus posters, and follow USC Residential Education on Facebook and Instagram.

Residential Housing Association (RHA)

The Residential Housing Association serves all students who live in university housing by providing them with ways to contribute to and enhance their residential experience at the University of Southern California. RHA acts as a unified voice to build community, empower residents and create opportunities for leadership development. RHA also strives to act as a resource by promoting and practicing self governance, while representing the residential community on both regional and national levels. In addition, RHA is the governing board for each Community Council (CC), a group of elected leaders in each of the residential colleges.

Smoke-Free Environment Policy

All University Park (on-campus) and North University Park (off-campus) housing facilities are smoke-free environments. Smoking is prohibited in all indoor and outdoor facilities on university-owned properties without exception.

Residential Education Staff

The Residential Education staff fosters the holistic development of members within the USC residential community. They are committed to providing purposefully inclusive communities that create opportunities for personal and academic success in collaboration with members of the Trojan Family. Each Residential College is managed by a Residential College Coordinator (RCC)—a full-time, live-in professional who has earned a master's degree in higher education, student affairs administration, educational counseling or a similar area. The RCCs manage the day-to-day operations of the Residential College, including the supervision of the Resident Assistants (RAs). RAs support your academic and career goals, arrange programming to help you connect with other students, provide support and offer guidance about university policies. RAs are students, too, so they know firsthand what you are going through. They are trained to assist in a variety of situations and can be especially helpful in mediating roommate issues. RAs typically have multiple years of experience in on-campus living.

Members of the Residential Education staff are on call at all times and available to assist residents and offer support to students and family members, especially in emergency situations.

RESIDENTIAL EDUCATION

Phone: (213) 740-2080

Website: resed.usc.edu

Living on Campus

Selecting your housing is just the beginning. You also need to know how to get your USC ID card, apply for a parking space and choose a meal plan. In this section you will find the information you need about the range of services provided for USC residents.

USC Housing Services

Move-in and move-out, reassignment to a new building, help with maintenance problems—these are just some of the many residential services offered by USC Housing.

The Housing Services Office

Housing Services' full-time, professional staff handles housing assignments and billing and is available to answer your questions by phone or email.

Customer Service Centers (CSCs)

Five Customer Service Centers are conveniently located in our freshman housing facilities, each serving a specific community of buildings. You will not have to travel very far to take care of business. Our trained staff of full-time Customer Service Representatives and student support workers is available on-site to take care of move-in and move-out, early arrival requests, mail and package delivery, and maintenance issues. See page 37 for a list of CSC locations and telephone and fax numbers.

ResNet Internet Access

USC Housing provides high-speed wireless connections throughout its facilities. Residents may register with ResNet after moving in.

Housing Maintenance Services

The upkeep and cleanliness of university housing facilities is important for residents' comfort, health and safety. USC Housing has custodial staff responsible for maintaining the public areas in each building and a maintenance office to handle repairs. You can request a repair in person, by phone or online. Assistance with emergency maintenance needs is available 24 hours a day, seven days a week.

Cable TV Service

All USC housing facilities provide cable television service with an expansive lineup of channels, many of which are available in HD. There is no additional monthly charge for cable TV. Students who wish to take advantage of this service should bring a digital-ready television with them when they move in.

Telephone Service

Due to the widespread use of mobile phones by college students, USC has eliminated landlines from university housing. However, residents may request the installation of a landline at an additional cost. Public phones where students can dial campus numbers and 911 are located in all university housing facilities.

USC HOUSING SERVICES OFFICE

McCarthy Way Parking Structure (PSX)
Between New North Residential College and Pardee Tower
620 McCarthy Way, Los Angeles, CA 90089-1332

Phone: (213) 740-2546

Fax: (213) 740-8488 **Email:** housing@usc.edu

Residential Safety

Department of Public Safety (DPS)

As the central coordinating office for USC's security programs, the primary goal of DPS is to ensure a safe environment in which the social and academic endeavors of the university can be realized. DPS operates 24 hours a day, seven days a week. You should call DPS to report any emergency, including serious accidents, crimes, suspicious circumstances, fires and safety hazards.

The DPS office deploys security personnel on and around campus, and USC safety officers have clearly defined responsibilities. They patrol on and off campus in cars, on bicycles and on foot; conduct preliminary investigations of reported crimes; and file Los Angeles Police Department crime reports. Community Service Officers patrol all university-owned residential facilities and monitor the Access Network 24 hours a day.

Nearly 300 emergency telephones, identified by a blue light on top of the booth, are strategically located around campus, in many buildings, and on each level of every parking structure. These phones provide a direct line to the DPS office and should be used only in emergencies. All students are also encouraged to download the Trojan Mobile Safety App (LiveSafe), which provides immediate access to DPS and a "Safewalk" feature for any time you may have to walk somewhere alone. For more information, please visit www.usc.edu/mobilesafety.

Residential Verification Program

As part of our effort to make USC housing safer for our students, we have 24/7 security in every on-campus housing facility, as well as biometric verification stations and security surveillance cameras. Residents will be required to use their USC ID cards to enter the facility and complete a biometric scan to verify that they live there. As part of the move-in process, all incoming freshmen will need to have their biometrics registered at their Customer Service Center. All resident information is stored locally and is not accessible to the general public or via the Internet.

DEPARTMENT OF PUBLIC SAFETY

Downey Way Parking Structure (PSA)

Emergency Only: (213) 740-4321

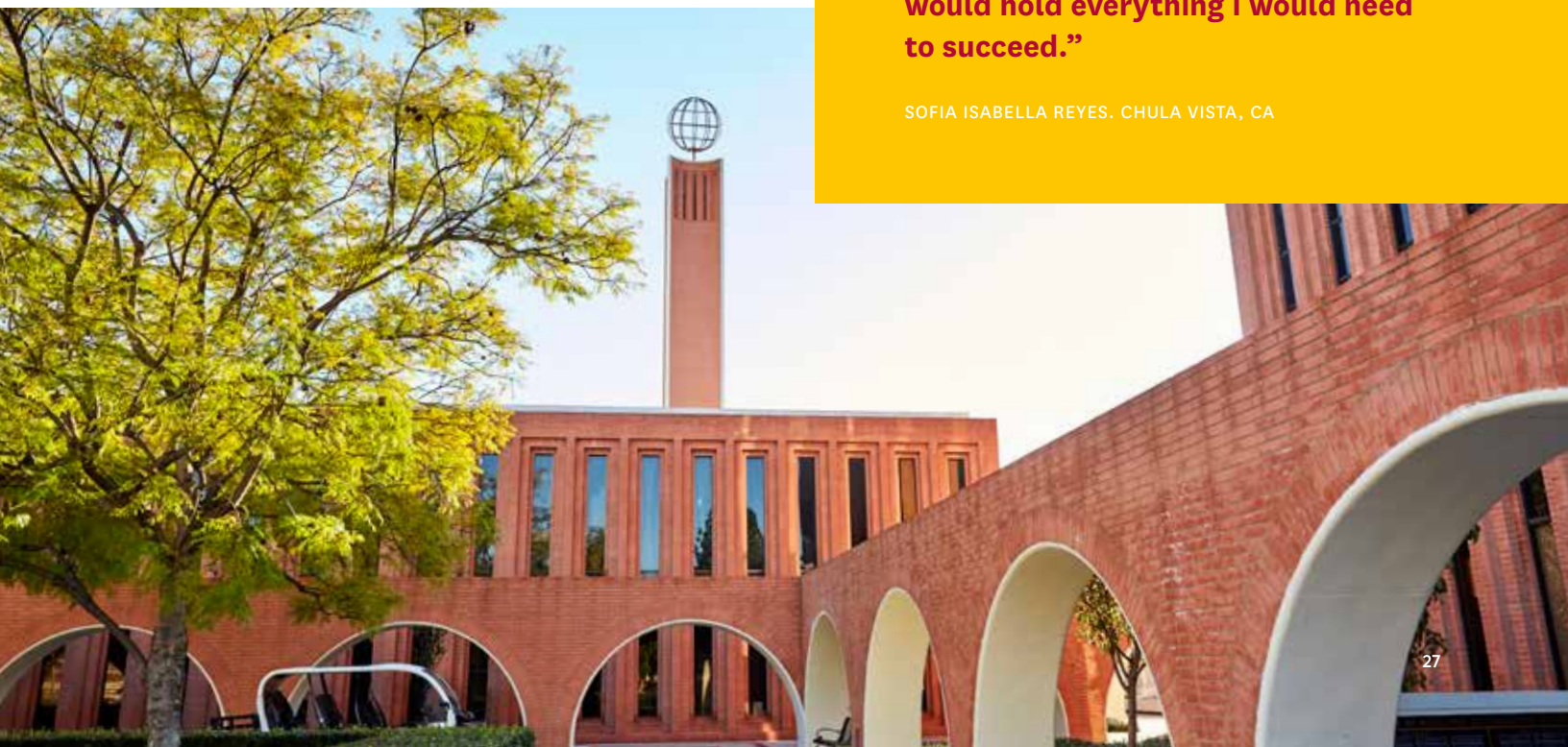
(or use a campus emergency phone)

General Information (DPS activities, policies and available services): (213) 740-6000

Trojan Voices

"I chose USC because I felt a positive vibe about all the small details, reinforcing that in the big scheme of things, the campus and staff would hold everything I would need to succeed."

SOFIA ISABELLA REYES, CHULA VISTA, CA



Meal Plans & Dining Options

One of the most important parts of your residential experience at USC will be what you choose to eat. USC Hospitality is delighted to offer you award-winning options in alignment with our Food Philosophy and goal to provide delicious, socially responsible cuisine for the Trojan Family. From residential dining halls to a mix of full service eateries, cafés and convenience stores, our program is designed to meet the unique needs and tastes of our student body.

Meal Plans

Meal plans are assigned based on a combination of housing location and class standing. All freshmen living in university housing will be assigned a mandatory meal plan regardless of their residence when they confirm a USC Housing contract. Resident upperclassmen may elect to change or upgrade to any meal plan available for their assigned hall or apartment.

USC Hospitality is currently updating our meal plan options, but rest assured we will offer a variety of meal plans that can be tailored to your specific needs.

Prices for 2021-2022 meal plans have not been finalized as of the publication of this brochure. Updated information and pricing for fall 2021 meal plans will be available on the Hospitality website in spring 2021.

The availability of listed dining facilities, services and programs is subject to local health authority restrictions.

Other Dietary Options

Vegetarian and Vegan

Residential dining halls and campus retail venues offer vegetarian and vegan entrées, side dishes, and salads.

Food Allergies and Other Special Dietary Needs

We recommend that students with special dietary preferences or medically related needs contact the Hospitality dietitian, Lindsey Pine, at lpine@usc.edu prior to accepting a housing assignment. This will enable you to determine the location and meal plan best suited to your personal dietary needs. For additional information regarding meal plans and other services provided, contact USC Hospitality.

USC HOSPITALITY

Phone: (213) 740-6285

Website: hospitality.usc.edu

FOOD PHILOSOPHY

For more about USC Hospitality's Food Philosophy, visit hospitality.usc.edu/lso-program.

MEAL PLAN INQUIRIES

Visit the USCard website at mycard.usc.edu to change or inquire about the status of your meal plan.





Residential Dining

At USC, we are committed to providing a dining program with a wide range of options and facilities to ensure you have a positive dining experience every time you visit.

Accepted Meal Plans: All residential dining halls and other facilities listed here accept meal plans (within plan restrictions), as well as Dining Dollars and Discretionary transactions.

RESIDENTIAL DINING HALLS

Each campus dining hall features scratch cooking and rotating chef-driven menus showcasing a variety of both ethnically diverse cuisine and American homestyle fan favorites. Fresh and healthy options are plentiful, including daily vegan and vegetarian entrees and side dishes. Special dietary needs can be accommodated in our dining halls. (Registration is required.)

Our Residential Dining staff also fosters community interaction by planning and preparing special themed dinners throughout the semester.

CAFÉS & QUICK-SERVE VENUES

USC Hospitality operates a variety of cafés and eateries conveniently located around campus. You are never far from a cup of coffee, a sit-down meal or a grab-and-go lunch between classes. In addition to healthy, fresh menu items, we offer attractive, inviting settings ideal for meeting friends or studying. Hot and cold selections are available for breakfast, lunch and dinner.



Residential Services

The USC Bookstore

As the Official Store of USC, the USC Bookstore proudly serves the academic and spirit needs of USC students, faculty, staff, alumni and fans.

In addition to textbooks and course materials, the USC Bookstore offers a wide selection of other products, including school and office supplies, technology, clothing, gifts and exclusive Trojan apparel and souvenirs.

Our online store at **www.uscbookstore.com** offers many of the USC gifts and apparel available in the campus store, as well as technology products.

Remember: The USC Bookstore is the only place that you can use your USCard to purchase course materials and technology products.

THE USC BOOKSTORE

University Park Campus: (213) 740-0066

Customer Service: (800) 447-8620

Website: www.uscbookstore.com

USCard

In addition to being your student ID card, your USCard is also a multipurpose passport to services and activities on the USC campus. It enables you to gain entry to your USC housing, track your meal plan usage and conveniently pay for campus purchases.

Get your USCard student ID by visiting **mycard.usc.edu** and submitting your image online. You will pick up your ID at the USCard while attending your scheduled on-campus Orientation. If you are not attending an in-person Orientation, your ID will be mailed to the address you provided when submitting your USC ID application.

Identification

By identifying you as a currently enrolled student, your USCard entitles you to many campus privileges. It enables you to gain access to USC libraries, computer centers, the Lyon Recreation Center and the USC Village Fitness Center. It is also your ticket to home USC athletic events, will hold your purchased football season tickets and can be used to get discounts for on-campus cultural events. You should carry your USCard with you at all times.

Purchases

You can also arrange to use your USCard as a debit card to buy a variety of goods and services on campus, including books and merchandise from the USC Bookstore; daily parking permits at most university parking structures and lots; entertainment, amusement park and sporting event tickets from the USC Ticket Office; and items from convenience stores on campus. In addition, the card can be used in many university copy machines.

Meal Plans

If you are enrolled in a meal plan, your USCard will be electronically programmed with your plan's features. Simply present your card to the cashier to use swipes in the dining halls or Dining Dollars to pay for your meal.

Access Network

The Access Control System Network is an electronic entry monitoring system that operates in all USC Housing facilities. The Access Network's closed-circuit television and alarm systems help ensure residents' safety. If you are a resident of a university-owned housing facility, your USCard is programmed to function as an electronic key, giving you access to your building or apartment complex, parking facilities and other buildings on campus.

USCARD SERVICES

McCarthy Way Parking Structure (PSX)

620 McCarthy Way, Room 200 | Los Angeles, CA 90089

Phone: (213) 740-8709

Website: mycard.usc.edu

(Visit the USCard website to sign up for various meal plan services or to add discretionary funds to your account.)

Transportation & Parking Services

USC Transportation Services is the key to your university parking and transportation needs.

Parking Permits

USC Transportation offers parking convenient to all University Park Campus housing facilities. A permit is required to park in any USC structure or lot. Spaces are limited, and they sell out every year, so apply for your permit early.

To purchase a permit, please visit the Transportation website at transnet.usc.edu and create an online Parking Account. Permits are issued by lottery for the entire academic year (fall and spring semesters). During the Parking Lottery Registration Period, log in to your account and click on “Add or Edit Parking Waitlists” to add yourself to waitlists for up to eight different lots, in descending order of preference. Registration periods are May 1 through May 15 for fall permits and November 1 through December 6 for spring permits. You will be notified by email whether you received a permit after the registration period closes.

Your student fee bill will be charged once in the fall and again in the spring. If you need to cancel your permit for any reason, it must be returned to USC Transportation to avoid further charges.

Bus Service

University-owned buses operate seven days a week, from early in the morning until late in the evening, providing service to nearby apartments. Schedules are available online and in person from USC Transportation. Students, staff, faculty and university guests may use the buses free of charge.

Campus Cruiser/Lyft

The student-run Campus Cruiser/Lyft program provides a supplementary service to our buses and a safe ride home for students and staff during evening hours. This car service offers rides to locations within an approximate one-mile radius of the center of campus. Lyft provides additional free service when wait times exceed 15 minutes.

USC TRANSPORTATION OFFICE

McCarthy Way Parking Structure (PSX)

University Park Campus

Phone: (213) 740-3575

Website: transnet.usc.edu

Visit the USC Transportation website for the most up-to-date parking rates, bus schedules and more information.

Parking Locations & Rates

Parking is available on the University Park Campus, at all university-owned apartments in the North University Park area and at the Grand Avenue Structure. A permit is required to park in any USC structure or lot.

Spaces are limited.

Please note: Information regarding parking permits and rates is accurate at the time of publication. Permits, conditions and pricing are subject to post-publication changes.

Permit	Location	Price
University Park Campus	On-campus parking structures	\$499.50 per semester
North University Park	On-site lots at housing facilities north of Jefferson Blvd	\$337.50 per semester
Grand Avenue Structure	East of University Park Campus. Bus service is available to and from campus every 15 minutes, Monday–Friday, 6:30 a.m.–11:00 p.m.	\$364.50 per semester
USC Shrine Structure	On Jefferson Blvd near the Shrine Auditorium	\$499.50 per semester

Application & Assignment

USC Housing's online application is the fast and convenient way to apply for university housing. Visit housing.usc.edu/portal to get started.

The Importance of Applying Early

Housing assignments for incoming freshmen are made on a first-come, first-served basis. After class standing, the single most important factor in determining where you will be assigned is the date we receive your application. The earlier you apply, the greater the likelihood you will receive one of your building, room type or program preferences. This is particularly true for freshman buildings in high demand. Only admitted students may apply, and it's a good idea to apply as soon as you are admitted and receive your login information.

Please note: USC Housing expects to receive applications from newly admitted students for the 2021-2022 academic year as early as February 2021. Most incoming freshmen apply by May 3.

Portal Login

Within approximately a week of your admission to USC, you will receive an email from USC Housing with your login information. Until then, you will not be able to apply, but once received, you may access our portal to submit your application.

Demographic information including name, gender, date of birth and permanent address will already be uploaded to our system. Please visit your Profile to ensure this information is correct and to enter any additional details, such as your emergency contact information.

May 3, 2021 Freshman Housing Guarantee Deadline

Incoming freshmen whose housing applications are received in our office by the May 3 deadline:

- Are guaranteed a space in USC Housing;
- Are eligible to be considered for a special interest community; and
- May participate in the online roommate-matching process.

Meeting the May 3 deadline for guaranteed freshman housing does not necessarily mean you will be assigned to one of your top choices, so you are strongly advised to apply as soon as you are admitted.

Check the USC Housing website at housing.usc.edu for the most up-to-date housing and application information.

Applying for Housing

Freshmen may apply for housing once they have been admitted to the university and have been issued a 10-digit USC student identification number. You may submit a housing application before sending your Enrollment Commitment Deposit form.

To apply, visit our online portal, click on “Application” and select the term for which you are applying (Academic Year 2021-2022 for those starting in August 2021; Spring 2022 for those starting in January 2022).

Application

BEGIN APPLICATION

To start your application, click on the “Continue” button on the right side of the page.

PERSONAL & CONTACT DETAILS

Here you will provide us with information we need to determine what housing is appropriate for you, such as your class standing. In addition, you will be asked to provide emergency contact information.

SPECIFIC ACCOMMODATION REQUESTS

Here you will indicate whether you have any special physical or medical needs we should consider when making your assignment. (You must register with Disability Services if you require specific housing.)

PROFILE

In this section you will answer a series of questions about your personal living preferences, giving you the opportunity to participate in our roommate-matching process. (See “Living With Others”, page 24.)

APPLICATION CATEGORY

Please select your category. Newly admitted students should choose “New to USC”.

LIST HOUSING PREFERENCES

You must list five housing preferences in order of interest. Please review the building descriptions in this brochure or on our website before entering your preferences. Please select only buildings for freshmen.

SPECIAL INTEREST HOUSING

You may indicate a special interest program for which you would like to be considered. If you do so, be certain to list the corresponding building as your first housing preference.

SUPPLEMENTAL APPLICATION

Some special interest programs require a supplemental application. For more information on which programs require supplemental applications, please see page 22.

GENDER INCLUSIVE HOUSING

You may indicate if you are interested in Gender Inclusive housing here. A supplemental application will be required.

APPLICATION FEE

You will not need to pay the \$55 application fee at the time you apply. This fee will be charged to your university account with your August bill, once you have a housing contract. Please note that once charged, this fee is nonrefundable.

At this point your application is complete. You have the option to continue on to select a roommate.

CHANGING YOUR APPLICATION

You may change your housing preferences or special interest request and add roommate requests up until the time assignments are made. For other changes, please contact the Housing Services Office.

When you have been assigned, we will notify you by email and direct you back to the portal to complete the steps listed in the “Contracts” section on the next page.

ROOMMATES (OPTIONAL)

If you would like to request specific roommates, you can do so by creating a roommate group and adding those students to your application by entering their screen name(s) and/or 10-digit USC ID number(s). For your requests to be considered, they must be mutual, and the housing preferences for each roommate, including any special interest programs, must be exactly the same. Roommate requests cannot be guaranteed.

If you do not have a specific person in mind, you can conduct an online search for potential roommates and be presented with possible matches based on the information provided in your Profile. You will be able to contact potential roommates and update your application to request them. (See “Living With Others”, page 24.)

HOUSING ASSIGNMENT

Once you have been assigned a housing space, you will be notified by email. You can then log in to the Application portal on the Housing website to review your assignment.

Assignments

We can offer housing assignments only to students who have submitted their USC Enrollment Commitment Deposit form and the \$300 enrollment deposit, or approved waiver, to the Office of Admission.

The USC Housing Services Office makes assignments based on space availability and the following criteria:

- The date your application is received by USC Housing Services; and
- Available spaces in the buildings or programs you have requested and for which you are eligible.

Your assignment will be as close to your requests as possible, based on availability and eligibility; however, there is a possibility that it may not match any of your building preferences. (Please note that your room or apartment number is not guaranteed and is subject to change without notice.)

Freshmen (as defined on page 3) whose housing applications are received by USC Housing on or before May 3 are guaranteed housing. This is not a guarantee of a particular type of assignment or a specific building. Early receipt of your housing application increases your chances of being assigned to one of your building or program preferences; however, it does not guarantee it.

Contracts

After reviewing your assignment, you will need to accept and confirm your contract to finalize your housing.

CONFIRMATION PAYMENT

You may submit your \$800 confirmation payment electronically by Visa, Mastercard, American Express or Discover Card. Half this fee will be credited to your student account in the fall semester and the other half in the spring semester.

CONTRACT & FINISH

To confirm your assignment, first read through the Living Agreement. You must then click on the "I Agree" button to accept the terms and finalize your contract; if you fail to do so, your assignment will be canceled. Clicking on the "I Agree" button is the electronic equivalent of signing a contract, and by doing so you are agreeing to be legally bound by the terms of the Living Agreement.

Important: If you do not confirm your contract and make the confirmation payment by the due date indicated, your assignment will be canceled and given to another applicant.

MEAL PLANS

This page will show the default, mandatory meal plan for your assignment. You can add or change your meal plan on the USCard website at mycard.usc.edu.

Once you have accepted the contract, you will see a confirmation page, summarizing the basic details of your housing assignment, including your current roommate(s). Please print a copy for your personal records.

Reassignments

If you would like to change your assignment after receiving your contract, you can request a reassignment. To be eligible, you need to have confirmed your contract and made the \$800 confirmation payment prior to submitting your request. Reassignments are processed in two ways: by reassignment list and over the counter.

REASSIGNMENT LIST (PRIOR TO MOVE-IN)

To request an assignment change prior to move-in, please read the reassignment information on our website and submit your Reassignment Request online. Requests are placed on a reassignment list in the order received and processed based on eligibility, gender and space availability. We make every effort to complete requests, but reassignment is not guaranteed. If we are able to fulfill your request, you will be emailed confirmation that you have been reassigned. This will be your new housing assignment; your previous assignment will be canceled and offered to another student.

Reassignments are processed from late May to mid-July. On July 16, the Housing Services Office will begin canceling all unfulfilled requests. If your request is not fulfilled, you should move into your contracted housing assignment on August 18. No new requests will be accepted until the reassignment process re-opens in September.

OVER THE COUNTER (AFTER MOVE-IN)

There is no reassignment list during the academic year. Beginning Wednesday, September 8, reassignments may be requested over the counter at any CSC or at the main Housing Office. If a space that meets your housing needs and eligibility becomes available, you can be reassigned on the spot. Reassignments during the academic year are halted from mid-November to mid-January to facilitate the assignment of students arriving spring semester.

Cancellations

If you decide to cancel your application prior to being assigned, or to cancel your housing assignment prior to confirming your contract, print and complete the Cancellation Request form on our website and send it to USC Housing Services. The application or assignment will be canceled; the \$55 application fee will not be refunded.

You are responsible for the terms of the contract once it has been confirmed; however, you may still submit a Cancellation Request to be released from your contract:

- If your cancellation is granted by June 4, you will receive a full refund of the contract confirmation payment.
- If your cancellation is granted after June 4, you will not be eligible for a refund of the \$800 contract confirmation payment, even if you decide to withdraw from the university.
- If your cancellation request is not granted, your contract will be in force and you will be held to its provisions.

You may request in writing to reactivate your application at any time during the same academic year without paying an additional fee. For assignment purposes, the date of reactivation will be your new application date.

Contract Dates

Specific start and end dates are associated with university housing contracts. Once confirmed, the contract is in force for that time period. All housing contracts run for the full academic year. Monthly and semester-length contracts are not available.

UNIVERSITY PARK & NORTH UNIVERSITY PARK HOUSING

All housing contracts for these spaces begin on Wednesday, August 18, 2021, and end on Wednesday, May 11, 2022. However, university residence halls and suites are closed for safety and security reasons during the winter break, from December 15, 2021, at 5:00 p.m. (the last day of fall semester finals) to January 6, 2022, at 8:30 a.m. You do not need to move out your belongings, but you will not have access to your room. Be sure to take everything you need with you and plan to stay elsewhere during that period. Residence halls remain open during Thanksgiving and spring breaks. Check with your Customer Service Center for details. Apartment buildings remain open for the full academic year and may be continuously occupied by residents through the winter and spring breaks.

Requests for Early Arrival

Some departments and programs schedule activities before the official Move-In date of August 18, 2021. To the extent possible, we want to accommodate residents who wish to check in to their housing assignments early for these activities. Early arrival requests must be received in written form from the department or academic program with which you are affiliated.

Residents may request early arrival on an individual basis. Because we must also plan for summer school student departures, conferences and other university summer programs, individual requests may not be honored. Requests should be submitted by August 1. Requests may not be made for arrival earlier than five days prior to the contract start date.

Customer Service Centers grant final approval of early-arrival requests and will do so only if there is sufficient time to clean and prepare the room. You will receive an email response letting you know if your request can be accommodated. Incoming residents must call their Customer Service Center to verify early move-in approval before arriving at USC.

If the request is approved, you will be charged \$75 for each night you stay prior to the first day of your housing contract. Residents who arrive without approval may be turned away. Those who can be accommodated will be charged a \$200 per night fee.

Applying for Housing by Mail-In Application

If you would prefer to submit a written application, please visit our website to download an application form. Complete the form and mail it to USC Housing Services, 620 McCarthy Way, PSX 137, Los Angeles, CA 90089-1332. (Please note that our roommate-matching process is available only to students who apply online.)

The USC Housing Office will send you a receipt card to let you know that your application was received. Your application date will be the date your application is received in our office—not the postmark date. Once we have made your housing assignment, we will notify you by email. There will be a \$55 mandatory application fee applied to your first billing statement.

How to Apply for Residential Colleges & Special Interest Communities

If you would like to live in special interest housing, indicate the desired program and its corresponding building in your housing preferences. To be considered for your special interest preference, your application must be received by May 3. Note: Some programs require supplemental applications. For more information, see pages 10-23.



Summer Housing

There is a separate application and assignment process for summer housing. More information about summer housing will be available in late March 2021. Please contact the USC Housing Services Office or your CSC about summer housing options and application information.

Application & Assignments Timeline

Late February	May 3	Mid-May	Late May	Early June	June 4	July 16	Early August	August 18
Housing application available online	Application deadlines for: guaranteed freshman housing, freshman roommate-matching eligibility & special interest communities	Email notification for first round of freshman assignments	Email reassignment notifications begin	Email notification for second round of freshman assignments	Last day for new students to cancel and receive their \$800 refund	Reassignment list ends	Move-in information mailed	Move-in Day!

Listed dates may change subject to local health authority restrictions and guidelines.

Housing for Spring 2022

Freshman students admitted for the spring semester can submit a housing application beginning July 1, 2021. The housing information and procedures presented throughout this brochure apply to applicants for spring housing, except for the important differences noted below.

Availability

Spring housing assignments are based on: (1) the number of students admitted to USC for spring semester; and (2) the number of students who leave university housing during fall semester. Freshman housing is usually filled to capacity at the beginning of fall semester. Therefore, only spaces that become vacant can be offered to freshmen admitted to spring semester.

The availability of specific housing types is difficult to predict, and it is often not possible to place applicants in their top preferences or with requested roommates. As space allows, spring admits will be assigned to freshman spaces; however, to be offered university housing, most freshmen arriving spring semester will be placed in upperclassman undergraduate buildings in North University Park. More information about our facilities for upperclassmen, along with a complete map of all university housing locations, can be found at housing.usc.edu.

The availability of listed housing accommodations, programs and services is subject to local health authority restrictions.

Application & Assignment

The application for spring 2022 housing will not be available until July 1, 2021. Your application login information will be emailed to you in late June. In the past, the majority of spring applications have been received on July 1. Due to high demand and the uncertain supply of housing spaces, you should apply early for the best chance of receiving a housing assignment. To be considered for spring housing, you must select the Spring 2022 option when applying.

Assignments for Spring 2022 will begin in mid to late November 2021 and will be based on application date, gender and availability. Students will be notified of their assignments by email and directed to the Housing Application portal on the USC Housing website to confirm their contracts. Students assigned for the spring will not be eligible for reassignment until over-the-counter reassignment begins in mid-January (see page 34).

Move-in day for spring residents is January 6, 2022.



Directory

USC HOUSING SERVICES

620 McCarthy Way
Los Angeles, CA 90089-1332
Tel: (213) 740-2546
Fax: (213) 740-8488
Email: housing@usc.edu
Website: housing.usc.edu

OFFICE FOR RESIDENTIAL EDUCATION

3601 Trousdale Parkway
Suite 200
Los Angeles, CA 90089-4892
Tel: (213) 740-2080
Fax: (213) 740-9781
Website: resed.usc.edu

DEPARTMENT OF PUBLIC SAFETY

Emergency
Tel: (213) 740-4321

Non-emergency
Tel: (213) 740-6000

USC TRANSPORTATION SERVICES

Tel: (213) 740-3575
Website: transnet.usc.edu

USCARD & MEAL PLANS

Tel: (213) 740-8709
Website: mycard.usc.edu

USC BOOKSTORE

Tel: (213) 740-0066
Website: www.uscbookstore.com

USC HOSPITALITY

Tel: (213) 740-6285
Website: hospitality.usc.edu

Customer Service Centers (CSC)

University Park Campus Centers (Los Angeles, California, 90089)

PARKSIDE ARTS & HUMANITIES RESIDENTIAL COLLEGE

Tel: (213) 740-8860
Fax: (213) 740-4196
Email: mailprb@usc.edu

Parkside Arts & Humanities Residential College
920 West 37th Place

WEST RESIDENTIAL COLLEGE

Tel: (213) 740-3500
Email: mailcar@usc.edu

Webb Tower

1015 West 34th Street

PARKSIDE INTERNATIONAL RESIDENTIAL COLLEGE

Tel: (213) 740-1941
Fax: (213) 740-3454
Email: mailpks@usc.edu

Parkside Apartments
3730 South McClintock Avenue

Parkside International Residential College

3771 South McClintock Avenue

MCCARTHY HONORS COLLEGE

Tel: (213) 764-7904
Email: mailuvf@usc.edu

McCarthy Honors College
3096 South McClintock Avenue

NEW NORTH RESIDENTIAL COLLEGE

Tel: (213) 740-1492
Fax: (213) 740-3381
Email: mailevk@usc.edu

New North Residential College

635 McCarthy Way

Birnkrant Residential College

642 West 34th Street

SOUTH RESIDENTIAL COLLEGE

Tel: (213) 740-3626
Fax: (213) 740-6234
Email: mailptd@usc.edu

Marks Tower

612 Hellman Way

Pardee Tower

614 Hellman Way



Office of Admission

University of Southern California
Los Angeles, CA 90089-0911
admission.usc.edu

The University of Southern California admits students of any race, color, national origin, ancestry, religion, gender, sexual orientation, age, physical disability or mental disability to all the rights, privileges, programs, and activities generally accorded or made available to students at the school. It does not discriminate on the basis of race, color, national origin, ancestry, religion, gender, sexual orientation, age, physical disability or mental disability in the administration of its educational policies, admissions policies, scholarship and loan programs, and athletic and other school-administered programs. The University's full nondiscrimination policy can be found on the Web at eeotix.usc.edu/notice-of-non-discrimination.

The University of Southern California complies with all federal and state laws that protect individuals with disabilities from discrimination based on their disability status. As such, reasonable accommodations and auxiliary aids and services are available to individuals with disabilities when such modifications and services are necessary to fully access the institution's programs and services. Disability Services and Programs (DSP) provides accommodations and services to enrolled students with disabilities. Applicants and registered students with questions may contact the Office of Disability Services and Programs at dsp.usc.edu. The university's ADA/504 Coordinator is Christine Street. She may be reached at streetc@usc.edu.



[@uscadmission](https://twitter.com/uscadmission)